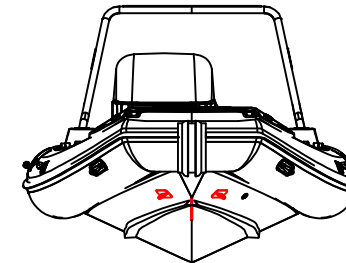
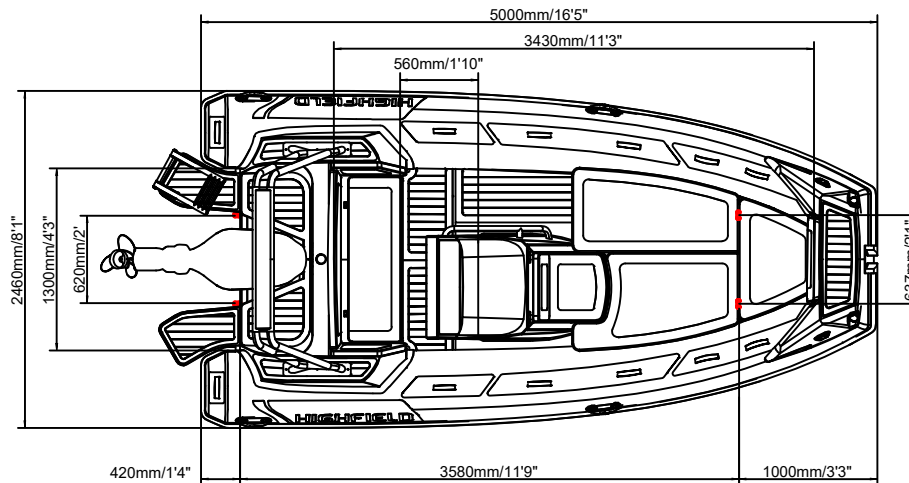
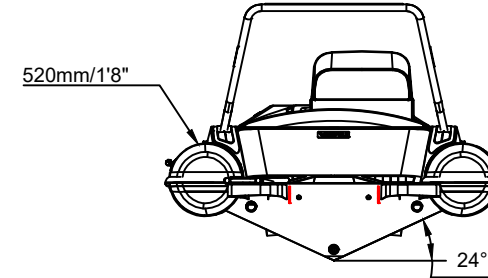
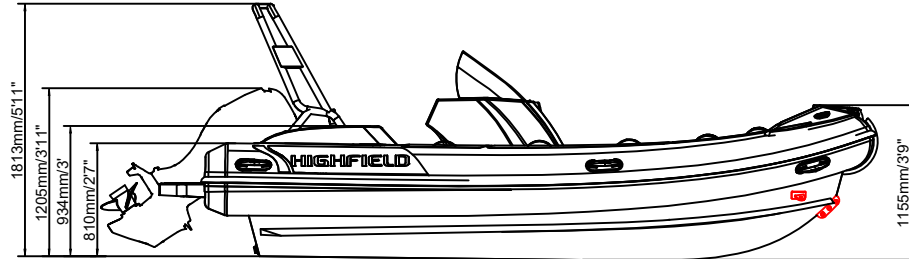


# SPORT 520

# SPECIFICATIONS



SPECIFICATIONS AND MAXIMUM CAPACITIES (Subject to change without notice. Tolerances: dimensions ±3%, weights ±5% )

MODEL	ISO 6185 PART	ISO 6185			#			Shaft	Outboard Engine				Sundeck		Tow post		Rollbar		Wet Weight (Approximate) 30HP (22.38KW) +Fuel		AIR CHAMBERS				
			KG	LB		KG	LB		KW	HP	KG	LB	KG	LB	KG	LB	KG	LB	PSI	BAR					
			KG	LB		KG	LB															KG	LB	KG	LB
SPORT 520	3	C	1058	2332	10	750	1653	L	74.6	100	207.6	458	516	1136	17	37.5	12.5	27.6	17.5	38.6	792	1746	6	3.63	0.25

Boat weight includes: console