



Drawing upon all of Highfield's vast experience in producing inflatable boats, this lightweight, single deck dinghy was created with a very simple motto in mind - 'weight does matter'.

As their name suggests, the Ultralite's weight make them a real alternative for those who may have chosen a soft bottom tender in the past but would prefer a hard hull for its performance.

Ultralite tenders are roomy and strong, yet light and easy to transport. These little boats can be launched and recovered by a single person and are easily transported on a roof rack.

You'll be impressed by their high level of quality and degree of craftsmanship. The excellence of the finish only compares to the detail of the ergonomics. The simple layout is combined with an uncluttered design and numerous standard accessories complete the picture.

The Ultralites are made of 2.5mm thick powder coated marine grade aluminium for the hull & 1100 Dtex fabric for the inflatable tube.

## ULTRALITE — RANGE



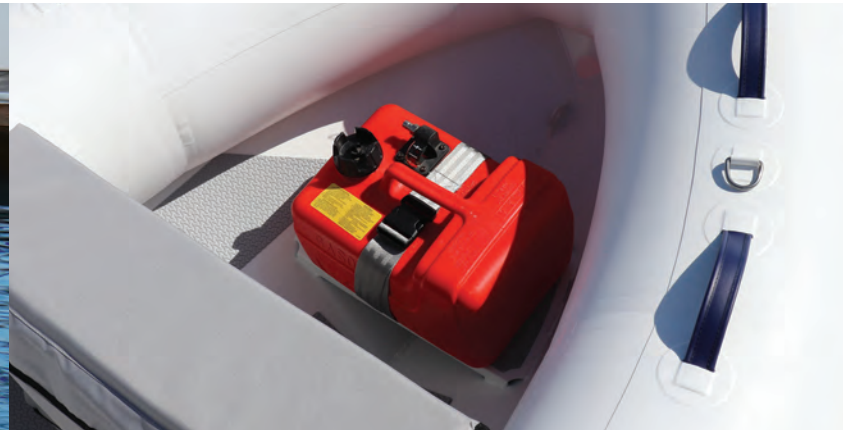
### STANDARD EQUIPMENT

- ORCA® Hypalon or Valmex® PVC tube
- Welded seams (PVC)
- Flush mount non-return valves
- High tensile chromated & powder coated aluminum hull
- Self-draining deck
- Removable seat
- Lifting points and towing eyes
- Tow bridle points
- Anti-slip deck
- Light weight rubbing strake
- Full length keel guard
- Under seat bag
- Highfield dry bag
- Foot pump, oars, repair kit

### OPTIONAL EQUIPMENT

- Boat cover
- Extra seat (UL310-UL340)





**OPTIONAL  
ADDITIONAL  
SEATING**

The larger of our Ultralite models (UL310 & UL340) are perfect as a lightweight family tender.

That's why we've designed them with optional additional seat bars that can quickly be slotted into place.

## ULTRALITE — RANGE



### UL240

Weighing just 37kg the UL240 is the smallest model in the range - ideal for shorter trips or family fun on the water.

### UL260

Being slightly larger than the UL240 model, the UL260 can carry up to four people and can be powered by a 6hp engine.

### UL290

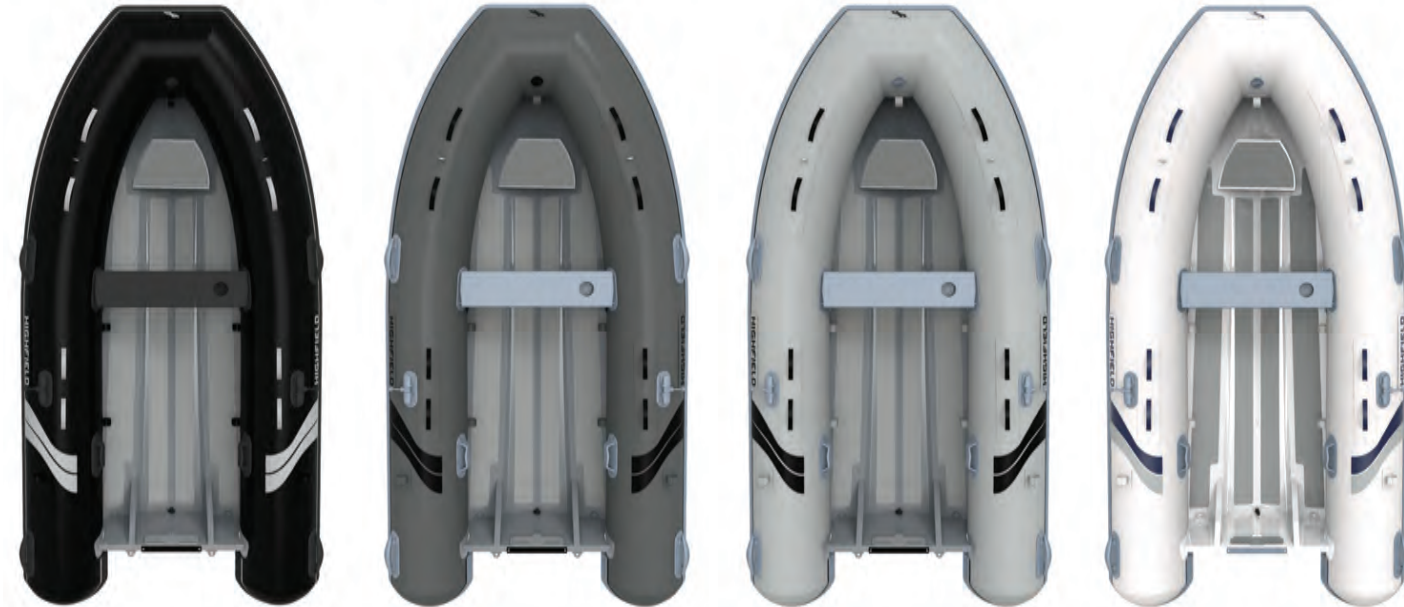
The UL290 is built to handle a 10hp engine, to take you and up to three other passengers a little further.

### UL310

With a dry weight of 57kg, the UL310 model remains light and easy to transport, whilst having room for up to 5 people on board.

### UL340

The largest model in the Ultralite range has room on board for up to 6 people, and can be powered by a 20hp engine.



Model	Length [A]	Beam [B]	Inside Length [C]	Inside width [D]	Weight	Deadrise [E]	Max Pax	Max Load	Max Hp	Shaft	Tube Ø	Airtight Chambers
UL 240	240cm 7' 10"	154cm 5' 1"	164cm 5' 4"	77cm 2' 6"	37Kg 82lb	10.5°	3	290Kg 639lb	5	Short	38cm 15"	3
UL 260	259cm 8' 6"	154cm 5' 1"	184cm 6' 1"	77cm 2' 6"	38Kg 84lb	10.5°	3+1	340Kg 750lb	6	Short	38cm 15"	3
UL 290	292cm 9' 7"	154cm 5' 1"	214cm 7'	77cm 2' 6"	39Kg 86lb	15°	4	375Kg 827lb	10	Short	38cm 15"	3
UL 310	313cm 10' 3"	172cm 5' 8"	224cm 7' 4"	79cm 2' 7"	57Kg 126lb	15°	5	585Kg 1290lb	15	Short	44cm 17"	3
UL 340	337cm 11' 1"	172cm 5' 8"	243cm 8'	79cm 2' 7"	62Kg 137lb	15°	5+1	663Kg 1462lb	20	Short	44cm 17"	3

